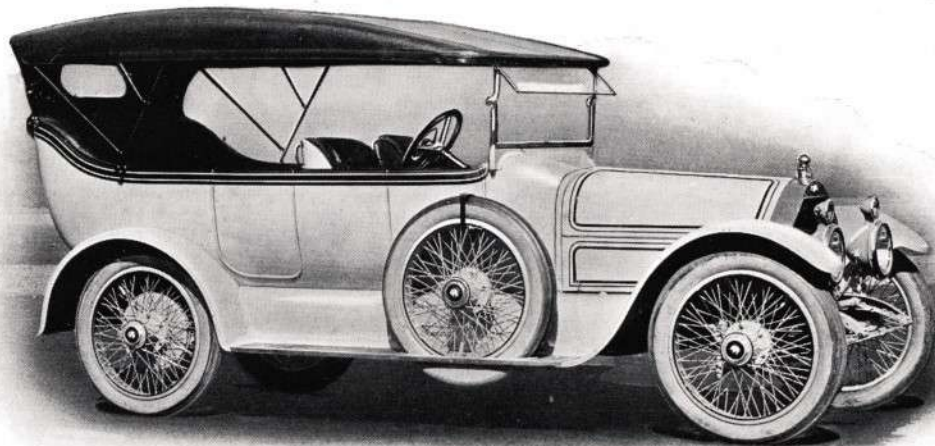


ANNOUNCING
THE
THOMAS MODEL "MF"

MANUFACTURED BY

E. R. Thomas Motor Car Co.

BUFFALO, NEW YORK



Motor—Six cylinder, four cycle, water cooled; cylinders cast in pairs; $4\frac{1}{4}$ " bore
 $5\frac{1}{2}$ " stroke; 40 H. P. (43.3 A. L. A. M. rating); speed, 4 to 50 miles per hour
high gear.

Transmission—Three speeds forward and reverse; selective type sliding gear. Direct
drive on high. Gear ratio, $3\frac{3}{4}$ to 1.

Rear Axle—Full floating rear axle; helical cut bevel gears.

Body—Hand hammered aluminum; design, color scheme and upholstering to suit purchaser.
chaser.

Wheels—Third lacing wire wheels, 37 x 5 all around (one extra interchangeable).

Tires—37 x 5; make, optional.

Self-Starter—Electric, 12-volt system. Motor cranks engine through reducing gears
that mesh with gears on flywheel. Complete electric lighting system.

Equipment—One-man top; ventilating wind shield; Hartford shock absorbers;
springs, horns, complete set of tools, etc.

Price—\$4,000, F. O. B., Buffalo, with complete equipment.

IN PREPARING the Series "MF" we have endeavored to provide for that large group of motorists, to whom only the best is sufficient, the unique combination of a thoroughly-proven chassis and the buyer's own conception of all that is modern and graceful in body design. Each model "MF" will represent an individual type that will not be reproduced. The car we build for you will be as free from the commonplace, and as distinctly your own personal idea of beauty, comfort and convenience, as your residence.

Orders for immediate or fall delivery now being accepted

E. R. THOMAS MOTOR CAR COMPANY

General Offices, Factory and Salesroom

1225-1227 Main Street

BUFFALO, NEW YORK