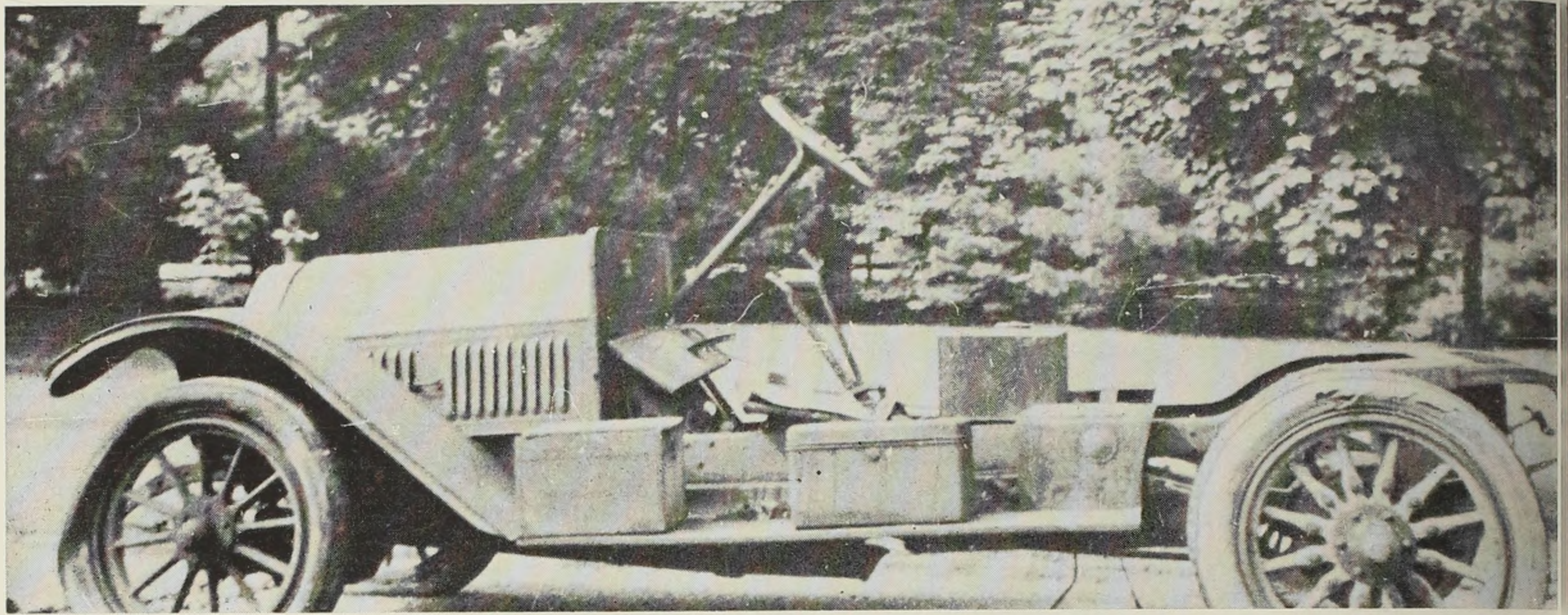


# The Transforming Thomas



before . . .

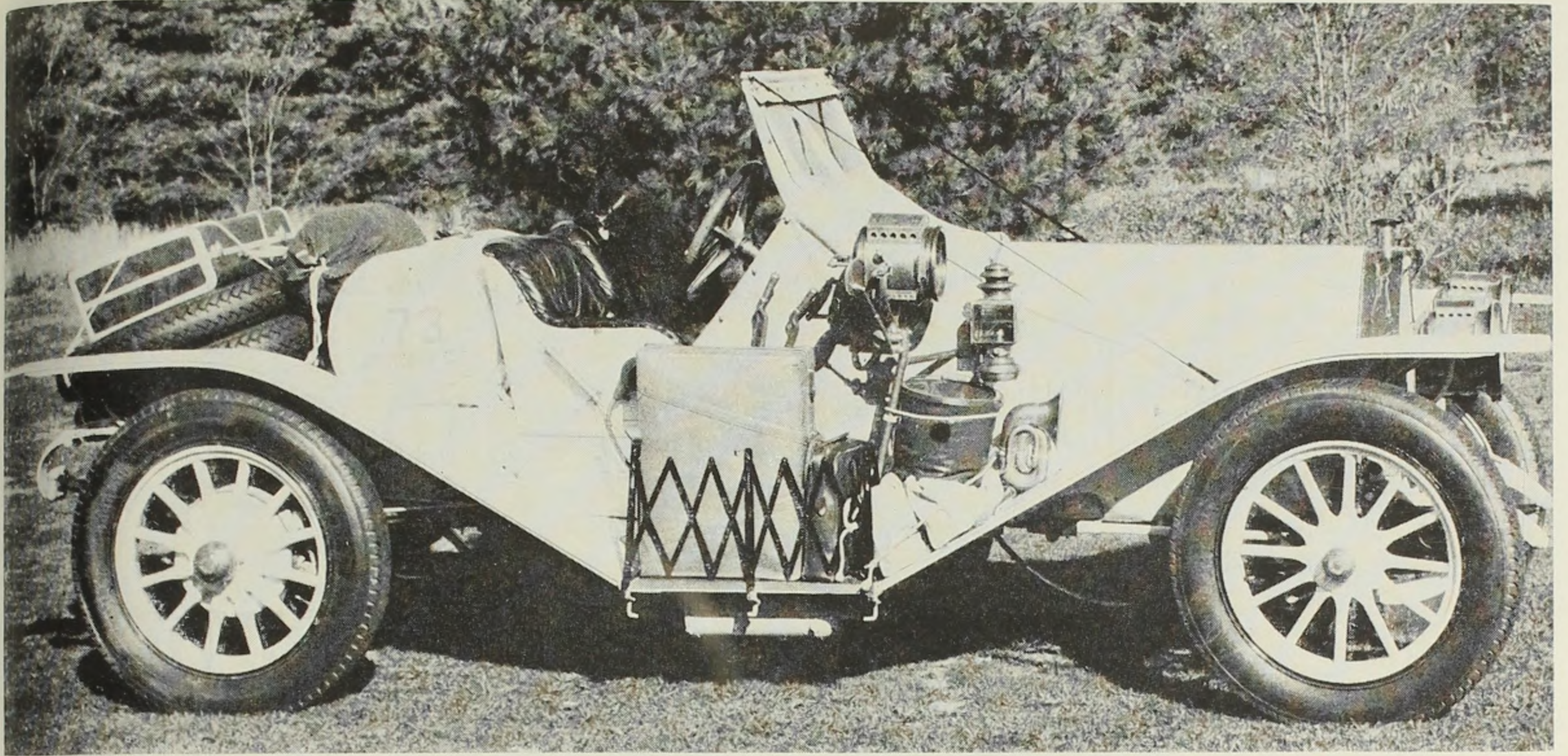
Captain Lew Schaefer of Long Island rescued the above 40 hp. 1910 Thomas from a junk yard. Schaefer, a precise restorer, turned it into a speedster, painted it red and striped it. The raceabout participated on Glidden Tours and took many prizes at local meets. Shown below, the Schaefers engage in an obstacle course contest at the

Long Island Old Car Club. Then, Paul Rutherford, Jr., fell in love with the Thomas on the 50th Anniversary of the 1904 Vanderbilt Cup. Eventually it became his, only not quite. The popular red Thomas was unfortunately always referred to as the Schaefer Thomas. Rutherford then painted it white and all was serene for five years

then . . .







## it changed again...

until a dog darted into its path. He swung quickly to avoid it and turned the car into a ditch, and the car toppled over on him. Heroically Mrs. Rutherford pulled him from the wreck. In the course of restoring, the Rutherfords decided they would like to have a four-passenger flyabout Thomas. (The Flyabouts were avail-

able in both the 6-40 and 6-70 series.) Rutherford obtained many original parts and with the help of blueprints and photos was able to turn the car into what it might have originally been. The Rutherfords drove their newly completed Thomas Flyabout on the 1961 Revival Glidden Tour and few recognized the transformation! 🐕

## ...and now!

